

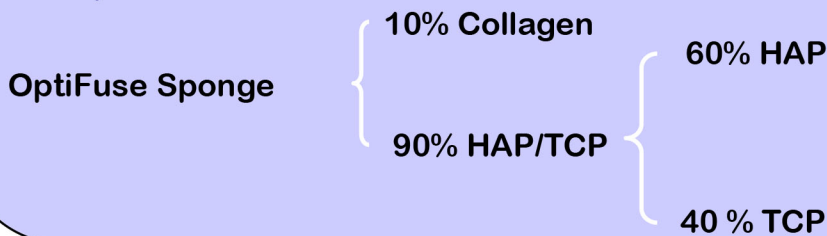
# OptiFuse Sponge

**OptiFuse Sponge: Osteoconductive, haemostatic & resorbable matrix for filling of bone defects**

## Characteristics

- OptiFuse Sponge is a bone substitute with hydroxyapatite, and tricalcium phosphate dispersed in a type I & III collagen matrix
- Bone remodelling in 3 to 4 months
- Validated haemostatic properties (tested by an independent laboratory)

## Composition

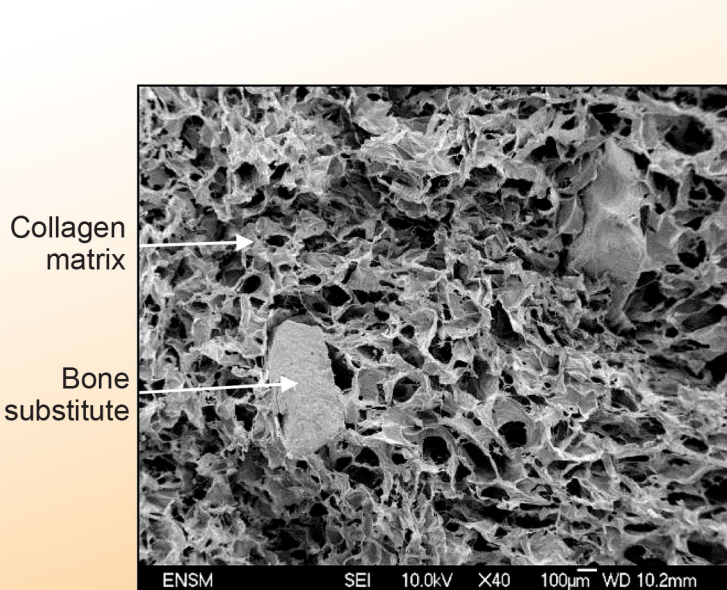


**OptiFuse Sponge** is indicated to fill different types of bone defects, whether it is from surgical, traumatic or pathological origin. It is indicated for:

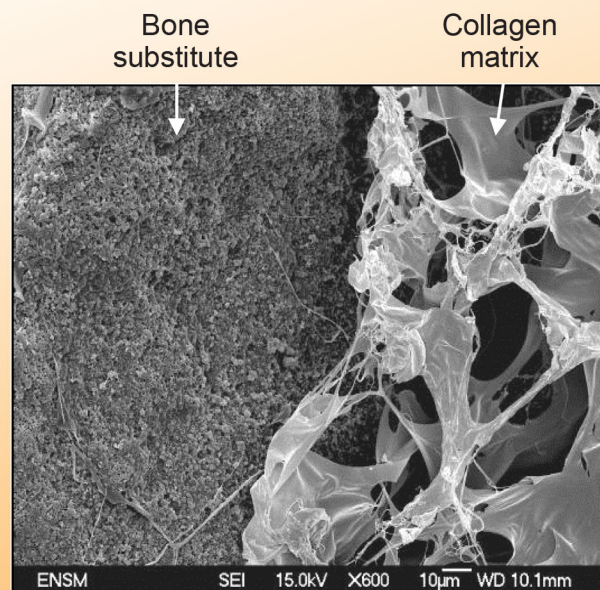
- bone sampling (compact-spongy bone sampling, tendon graft,...)
- bone tumor resection;
- osteosynthesis;
- arthrodesis, spondylodesis;
- pseudoarthrosis;
- osteotomy (sternotomy,...);
- other small bone defects.



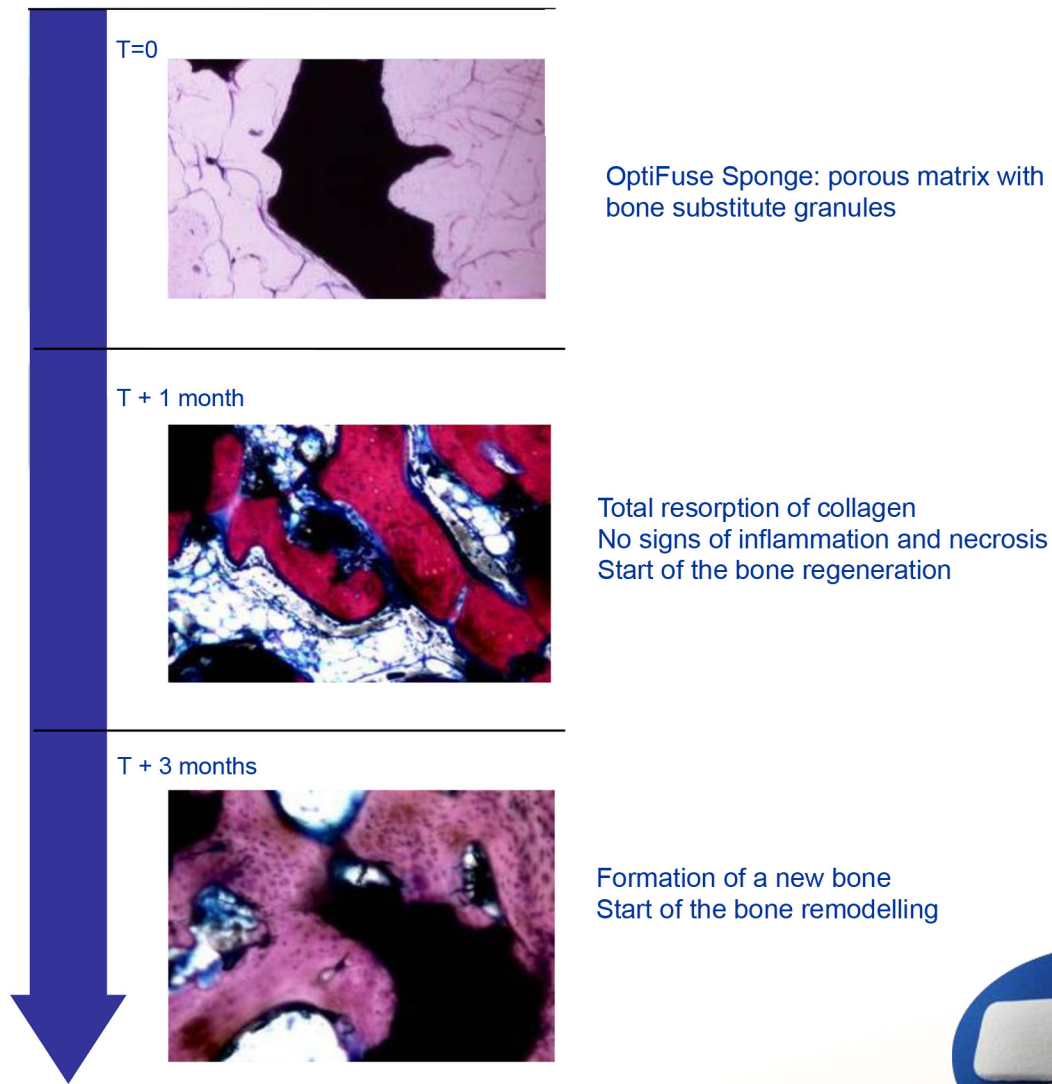
For maxillofacial and dental surgery, OptiFuse Sponge is indicated in case of bone reconstruction.



Porous collagen matrix with a homogeneous dispersion of bone substitute: haemostatic properties, cells colonisation and osteoconduction.



Intimate contact between bone substitute granules and collagen matrix



## Sizes

OptiFuse Sponge is presented in a double peel package and sterilized by irradiation.

OptiFuse Sponge's Sizes	Bone substitute sizes	References
12x12x12mm	80 - 200 µm	SP-1XS01HT1
12x12x12mm	0,5 - 1 µm	SP-1XS01HT2
12x12x24mm	80 - 200 µm	SP-1S01HT1
12x12x24mm	0,5 - 1 µm	SP-1S01HT2
30x30x6mm	80 - 200 µm	SP-1M01HT1
30x30x6mm	0,5 - 1 µm	SP-1M01HT2
35x60x6mm	80 - 200 µm	SP-1L01HT1
35x60x6mm	0,5 - 1 µm	SP-1L01HT2
70x110x6mm	80 - 200 µm	SP-1XL01HT1
70x110x6mm	0,5 - 1 µm	SP-1XL01HT2