

# OptiFuse Inject

INJECTABLE, BIOACTIVE AND RESORBABLE BONE SUBSTITUTE

## Presentation

OptiFuse Inject is an injectable, bioactive and resorbable bone substitute.

It is composed of 50% calcium sulphate and 50% hydroxyapatite.

OptiFuse Inject presents the following characteristics :

- Osteoconductive and resorbable
- Easy to use
- Injectability, working time and setting time adapted to surgeons' needs

## Composition

- 50% wt.  $\alpha$ -Calcium Sulphate
- 50%wt. Hydroxyapatite porous granules
- plasticizing agent
- sterile water

## Physical features

- Working time > 4min
- Setting time ~30min
- Compressive strength = 8MPa

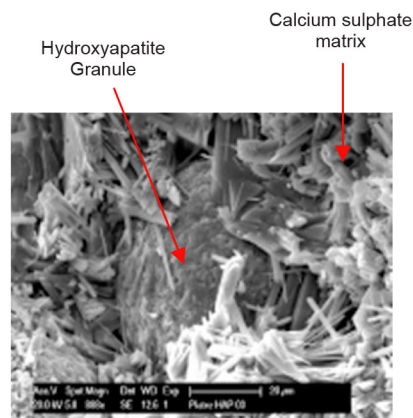
## Applications

- Orthopaedic Surgery
- Dental Surgery

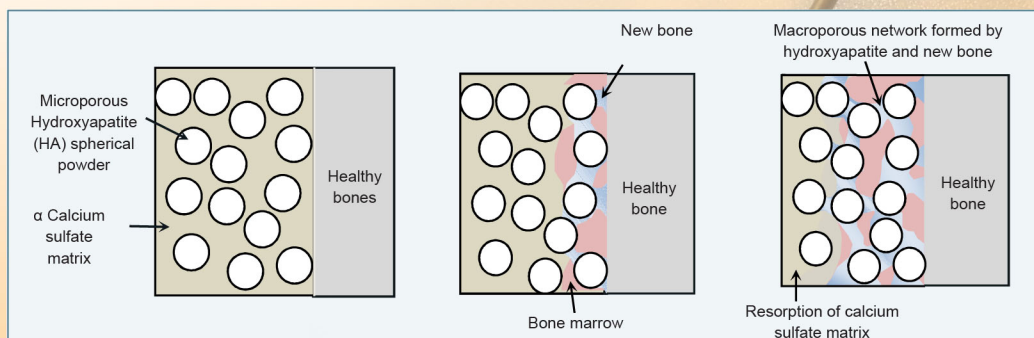
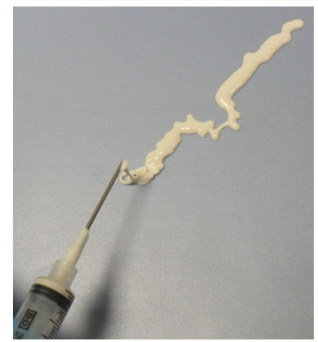
## Packaging

OptiFuse Inject is supplied as two syringes (one syringe with powder and one with liquid) which will be connected to obtain the required mixture.

Several doses are available: 2, 4, 8, and 16cm<sup>3</sup>



SEM image of the composite that shows the interface between hydroxyapatite granules and the calcium sulfate matrix



**Bone Healing Process**

## Instructions For Use



1. Equipments



2. Water dose sampling



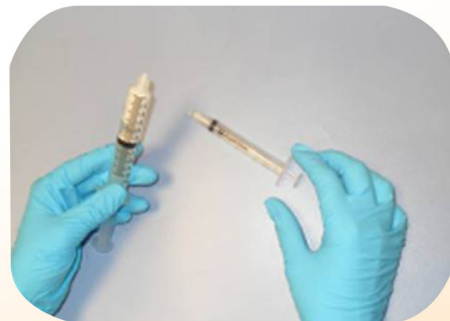
3. Connection of the two syringes  
(one containing water & the other one containing powder)



4. The liquid is transferred into the syringe with the powder in order to mix the two components



5. The mixture is transferred from one syringe to the other, several times, in order to obtain an homogeneous mixture



6. The two syringes are disconnected to fix the needle for injection

